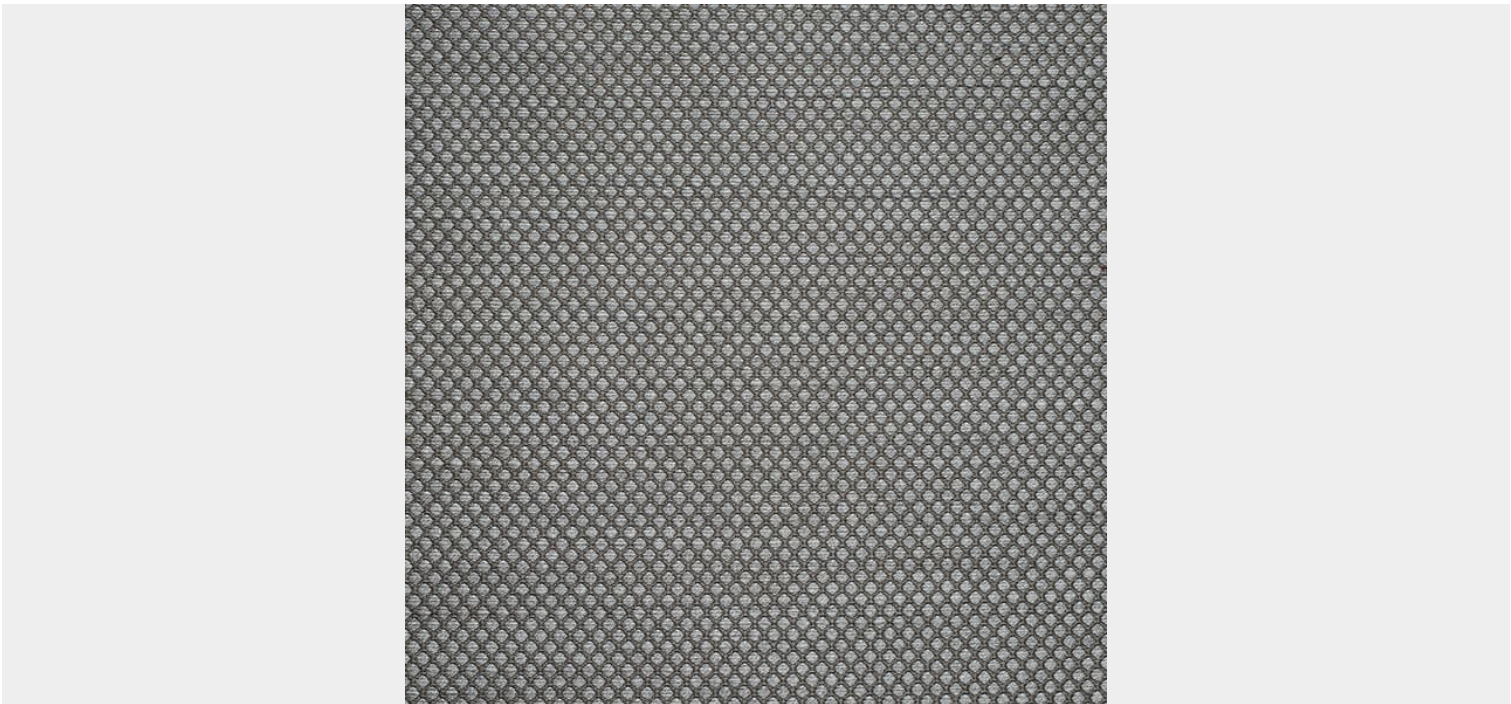


**FARADAY FAWN/GREY**



Images are for illustration purposes only, different screens will project different shades, please order your free sample to establish appropriateness of colour prior to order placement.

**SKU:** 166FAR1/851 | **Categories:** [Faraday](#), [Voyager](#) |

**Wash & Care** Do not use bleach. Do not tumble dry. Cool iron. Professional dry clean. Wash at 30°C, gentle wash. Line Dry Recommended |

**ADDITIONAL INFORMATION**

Collection	<a href="#">Voyager</a>
Flammability Ratings	<a href="#">B1</a> , <a href="#">BS 5867 pt 2 Type B</a> , <a href="#">M1</a> , <a href="#">NFPA 701</a> , <a href="#">IMO FTP Code 2010 Part 7</a>
Design	<a href="#">Faraday</a>
Colourway	<a href="#">851 Fawn Grey</a>
Colour	<a href="#">Grey</a>
Product Type	<a href="#">Woven</a>
End Use	<a href="#">Curtains</a>

Sector	<u>Cruise, Hospitality</u>
Material	<u>Fire Retardant, Trevira CS</u>
Pattern Type	<u>Plain</u>
Width	<u>Standard Width</u>
Width (cm)	<u>142</u>
Height Repeat (cm)	<u>0.7</u>
Side Repeat (cm)	<u>0.6</u>
Weight (g/m2)	<u>264</u>
FR Territories	<u>Cruise, France, Germany, UK, USA</u>

